

# QsplitMini Mini split unit air conditioner with heating



## Product data sheet

|                  |               |
|------------------|---------------|
| Product category | Mini splits   |
| Brand            | Qlima         |
| Model            | QsplitMini    |
| Colour           | White         |
| EAN code         | 8713508004723 |

## Technical specifications

| Technical specifications                               |           | Cooling            | Heating |
|--|-----------|--------------------|---------|
| EER / COP  | W/W       | 2,6                | 2,6     |
| Energy class   |           | A                  | A+      |
| Energy consumption - hourly indicative (Qsd/c) (Qsd/h) | kWh       | 0,6                | 0,6     |
| Power supply   | V/Hz/Ph   | 220-240~ / 50 / 1  |         |
| Rated power cooling / heating                          | kW        | 1,465              | 1,46    |
| Airflow - high mode                                    | m³/h      | 280                |         |
| Adjustable air flow - vertical                         |           | Yes                |         |
| Dehumidification capacity                              | l/24 h    | 12                 |         |
| For rooms up to  | m³        | 40 - 45            |         |
| Operating range  | °C        | 24 ~ 35            |         |
| Thermostatic range                                     | °C        | 16 ~ 30            |         |
| Sound power level (SWL)                                | dB        | 62                 |         |
| Sound pressure noise level at 1 m - high mode (SPL)    | dB(A)     | 52,3               |         |
| Fan speeds   | positions | 2                  |         |
| Control  |           | electronic / Wi-Fi |         |
| Air filter   | type      | Screen             |         |
| Refrigerant type / GWP / Charge                        | R/g       | R290 / 3 / 130     |         |
| Dimensions indoor unit (w x d x h)                     | mm        | 455 x 175 x 326    |         |
| Dimensions outdoor unit (w x d x h)                    | mm        | 460 x 212 x 363    |         |
| Compressor type  |           | rotary             |         |
| CO <sub>2</sub> equivalent                             | tonnes    | 0,00039            |         |
| Protection class outdoor unit                          |           | IP24               |         |
| Net. weight - indoor unit                              | kg        | 6,5                |         |
| Net. weight - outdoor unit                             | kg        | 13                 |         |
| Net. weight  | kg        | 20                 |         |
| Warranty   | year      | 2                  |         |

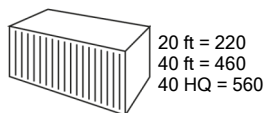
All data is measured in accordance with applicable EU specified standards at the time of production. To be used for indicative purposes only.

## Package content

Outdoor unit, Indoor unit, Drainage tube, Tube cover, User manual

## Accessories (to order)

| Description | EAN code |
|-------------|----------|
|             |          |
|             |          |
|             |          |



# Qlima

# QsplitMini Mini split unit air conditioner with heating



Perfect for camping



Cooling function



Comfortable heat



Dehumidifier function



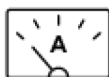
Smart connect



Timer function



Very silent



Suitable for low amperage



Adjustable airflow

---

**Wireless smart control:** The air conditioner is equipped with Wi-Fi for extra comfort and to save energy. With the smart Tuya app you can start, stop or operate the main functions of the air conditioner remotely.

---

**Cooling + dehumidifying + heating (heat pump):** The air conditioning is a complete year-round air treatment system. It heats and cools in an efficient way and can also be used as a dehumidifier.

---

**Air conditioning:** In COOLING mode the unit produces a refreshing cool airflow.

---

**Heating:** In HEATING mode the unit produces a warm air flow. The unit absorbs heat from the outdoor air to warm the air inside, a very efficient technique.

---

**Dehumidifying:** In DRY mode the unit extract excessive moist from the room. Note: In COOLING mode the air is also dehumidified.

---

**Refrigerant gas R290:** Natural gas with high energy efficiency. Environmentally friendly, R 290 gas has a neutral impact on the ozone layer.

---

**Fan speed setting:** The airconditioner has multiple speed setting. The LCD display on the remote control will show the chosen speed.

---

**Timer:** Timer function can be set between 30 minutes and 24 hours (Timer On or Timer Off).

---

**Plug and Play:** The unit doesn't require installation. Position the unit in the window frame, plug it in and enjoy instant cooling.

---